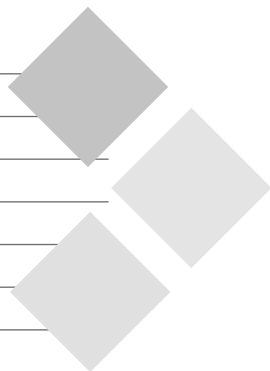


IT'S YOUR CHOICE

Building a Strategic Framework
for Drug and Alcohol Education



	Robert Bruce Middle
Anita Harvey	Westfield Middle
Nikki Stevens	Fulbrook Middle
Shirley Foskett	Hillcrest Post-16 Special
Jane Hodgkinson	Weatherfield Special
Judy Ruff	Flitwick Lower
Diane Beard	Gothic Meade Lower
Doreen Ponting	Beecroft Lower





David Doran
Strategic Director
Learning

‘Tackling Drugs to build a better Britain’ is the basis for the Government’s ten year Drug Strategy. This framework supports the main aims of the strategy, Local Education Authority guidance and policy for schools, and the Bedfordshire Police Crime Reduction strategy.



Paul Hancock
Chief Constable

We positively support the implementation of this Drug and Alcohol Strategy which will provide effective and essential communication with multi-agency partners for all schools in Bedfordshire.

Why Have a Drug and Alcohol Strategy?

To deliver effective Drug and Alcohol Education in order to help young people resist drug misuse and achieve their potential in society.

What is the Framework?

The framework will provide services which are accessible to all pupils, taking regard of race, religion, culture, language, disability and gender in all Upper, Middle, Lower and Special Schools.

How Will Schools Benefit from Taking Part in the Framework?

The framework will:

- Provide funding and resources;
- Provide a coherent framework for implementing a range of local and national initiatives;
- Provide a mechanism for the development of local partnerships and the effective use of outside help and support agencies;
- Enable schools involved in the 'Healthy Schools Scheme' to work towards accreditation for Drug and Alcohol Education;
- To enable schools to work more closely in their pyramids and provide effective programmes across all three phases;
- Raise awareness of the good practice that already exists within schools and enable them to share it with others.

MAIN ACTIVITY

Nursery – Year 4	Life Education Centres
Year 5	Hazard Alley
Year 6	Cigarettes/Alcohol/Solvents/Police School Liaison
Year 7	Outside Presentation (Theatre Group)
Year 8	Drug Identification/Police School Liaison
Year 9	alcohol services for the community
Year 10	Plan-B Peer Led Drug Education
Year 11	Drink Driving/Police School Liaison
Year 12	Plan-B Peer Education/Recruitment
Year 13	Drugs & Driving/Police Traffic Officers

Lower Schools: Nursery – Year 4

Nursery/Reception

- Pre Input Key Message – Body Knowledge
– Safety
- Main Activity – Taking Care of Myself (LE)
– All About Me (LE)
- Post input Key Message – Staying Happy & Healthy

Year 1

- Pre Input Key Message – Nutrition: knowledge
- Main Activity – My Wonderful Body (LE)
- Post Input Key Message – Nutrition: balanced diet and healthy meal
– Staying Safe
– Self-Esteem

Year 2

- Pre Input Key Message – Recognising Feelings
- Main Activity – The Human Machine (LE)
- Post Input Key Message – Recognising and managing feelings
– Drug Knowledge
– Self-Esteem

Year 3

- Pre Input Key Message – Self-Esteem: understanding personality
- Main Activity – Meet the Brain (LE)
– Attitudes (LE)
– Choices & Decisions (LE)
- Post Input Key Message – Circle Time
– Self-Esteem
– Risk Management
– Drug Knowledge

Year 4

- Pre Input Key Message – Raising Self-Esteem
– Self Awareness
- Main Activity – It's Great To Be Me (LE)
– Risks, Attitudes & Responsibility (LE)
- Post Input Key Message – Decision Making

Special Schools to access where appropriate.

KEY: LE = Life Education Centres

Provision

Resource packs for schools worth £50

Provision

Training for school teachers provided by LEA – supply cover provided for one teacher per school

Middle Schools: Year 5 — Year 8

Year 5

- Pre Input Key Message**
- Drug Knowledge: effects and risks of cigarettes and alcohol
 - All of us have the right to feel safe all of the time: discussion about feelings when we feel safe or unsafe
- Main Activity**
- Responsibility for behaviour and personal safety (HA)
 - Friends & Assertiveness Skills (LE)
- Post Input Key Message**
- Dealing with difficult situations: ways of getting help and communication skills
 - What to do in order to feel safe: recognising the signs we get when we don't feel safe

Provision
CrimeBeat to fund transport for Hazard Alley

Year 6

- Pre Input Key Message**
- Influences: decision making, media and advertising, friends and role models (LE)
 - What knowledge?: solvents and tobacco activities
- Main Activity**
- Decisions: attitudes, influences of image, media, friends and role models (LE)
 - Solvent abuse, alcohol and cigarettes (BP)
 - The Law and the effects of misuse (BP)
- Post Input Key Message**
- Risk Management: why people take drugs, different effects, risks involved, safe alternatives
 - Drug Knowledge: fact, fiction and opinion
 - Lifestyle: making healthy choices
 - Roleplay: resisting peer influence to drinking, smoking and taking solvents
 - Circle Time: pupils' voice (LE)

Provision
Training for school teachers provided by LEA — supply cover included

One teacher per school

Special Schools to access where appropriate.

KEY: LE = Life Education Centres BP = Beds Police HA = Hazard Alley

Year 7

- Pre Input Key Message**
- Reinforcement about awareness of feelings and personal safety
 - ‘What do you really think about smoking?’
 - What is peer influence? What am I talented at?: class or group discussion
- Main Activity**
- Theatre in Education Presentation (OP)
 - David Graham: also available via Schools Liaison Officers: not funded
- Post Input Key Message**
- Evaluation of presentation: what have you learnt? What did you like best? What effect has the presentation had on you
 - You and Your Body
‘Drugs and how they affect you’

Year 8

- Pre Input Key Message**
- Building Foundations: sensible discussion for talking about drugs
 - School rules about drugs
- Main Activity**
- Drugs identification of and consequences of crime (BP)
 - Making informed choices (BP)
- Post Input Key Message**
- Building on the facts: what are the risks and the choices we have and should we take them?
 - Where do you stand?

Provision

To visit all middle schools

Provision

Parental guidance booklet – postage paid for by Police (Year 8 only)

Special Schools to access where appropriate.

KEY: BP = Beds Police OP = Outside Presentation

Year 11

- Pre Input Key Message** – Revisit Why People Drink: what are the problems? Why are there breathalisers? Is alcohol the main concern?
- Main Activity** – Consequences of drinking and driving (BP)
- Post Input Key Message** – Evaluation: what did you learn? Will you change your way of thinking?
Discussion

Year 12 & 13

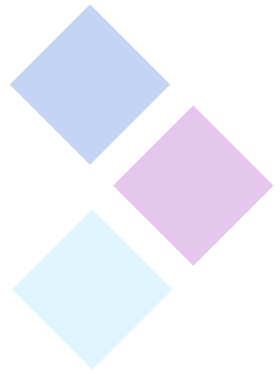
- Pre Input Key Message** – The effects of drugs on performance whilst driving
- Main Activity** – Recruitment as Peer Educators by Plan-B Schools to encourage volunteers in the planning implementation and evaluation of the Drug and Alcohol Education programme in their School (PB)
– Police presentation on signs and symptoms of drug use whilst driving (BP)
- Post Input Key Message** – Evaluation and debate on the police presentation

Special Schools to access where appropriate.

KEY: BP = Beds Police PB = Plan-B

Provision

Training for teachers provided by LEA – supply cover included. One teacher per school



The Framework is Sponsored by:

- Drug Action Team (DAT)
- Bedfordshire LEA
- Bedfordshire Police
- Crimebeat
- North Beds Community Safety Partnership
- Mid-Beds Community Safety Partnership
- South Beds Community Safety Partnership
- Luton and Bedfordshire Healthy Schools Scheme

For Further Information Contact:

Andi Whitwham
Drug and Alcohol Education Consultant
Russell House, 14 Dunstable Street,
Amphill, Beds MK45 2JT

- **Tel: 01525 405220 extn 346**
- **Fax: 01525 405128**
- **E-mail: whitwa@rhs.bedfordshire.gov.uk**



***Working in Partnership with
Bedfordshire County Council***